

VFace800-P

Visible Light Access control &
Time Attendance with Facial
recognition and mask detection



VFace800-P is a Linux-Based Access Control and Time Attendance terminal with visible light facial recognition. It supports big user capacity, reaching 10,000 Face, 10,000 ID and 3,000 Palm at fast verification speed.

The device adopts 5" TFT touch screen and is embedded with dual 2MP Camera, offering user-friendly operation interface. It supports mask detection which helps reducing the spread of germs and preventing infections straightly at each access point of any premises and public areas such as hospitals, factories, schools, commercial buildings, stations during current global public health situation.

VFace800-P, its recognition distance has been greatly extended up to 2 meters long, which significantly improves maximum traffic rate.

Features:



Face Recognition



5" Touch TFT Screen



Fingerprint Recognition



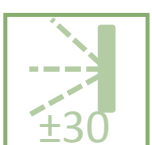
2.0 MP Camera



Palm Recognition



Access Control



Wide Angle Acceptance

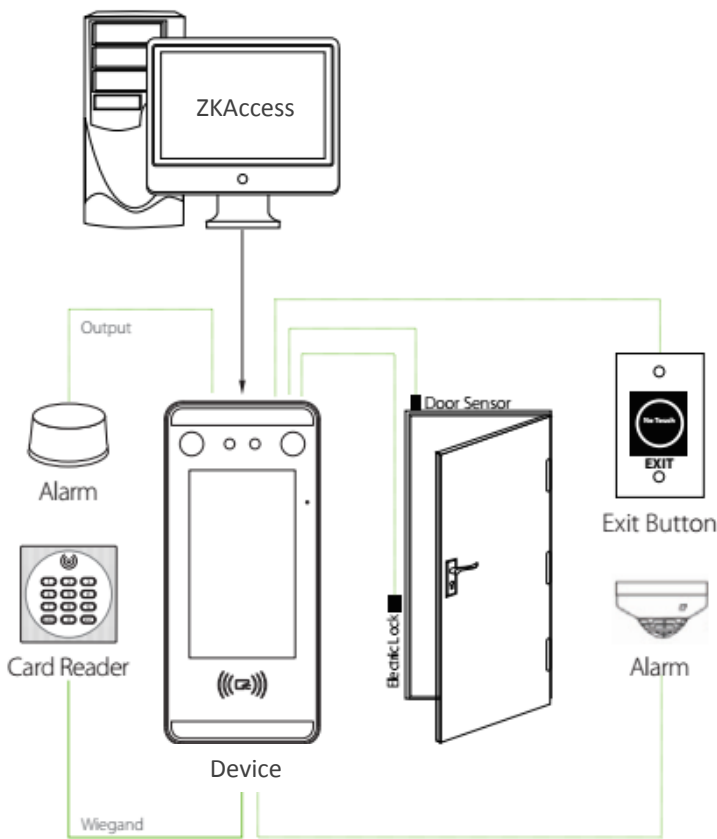


TCP/IP Communication

Specifications:

Display	5 Inch TFT Touch Screen
Face Capacity	10,000
Palm Capacity	3,000
ID Capacity	10,000
Logs Capacity	100,000
Communication	TCP/IP, Wiegand input/output, RS485, RS232, WiFi (Optional)
Standard Functions	ID Card, T9 Input, DST, Camera, 9 digital User ID, Access Levels, Anti-passback, Tamper Switch Alarm, Multiple Verification Modes, Face Mask Detection
Access Control Interface	3rd Party Electronic Lock, Door Sensor, Exit Button, Alarm Output, Auxiliary Input
Optional Functions	13.56MHZ MF Card, WiFi, ADMS
Operating Temperature	0 °C to 45 °C （-5 °F to 122 °F）
Operating Humidity	20% to 80%
Power Supply	DC 12V 3A
Dimension	206mm * 92mm * 24mm

Connection Diagram:



Optional Accessories

